

Centauri Compact LEO User Terminal

Auden's LEO User Terminal features a 32 x 32 TRX antenna array for **Ku** band, or full duplex TX RX antenna with onboard UDC for **Ka** band



Applications

- Broadband communications
- Emergency services
- IoT, Cloud services applications
- Government and military defense
- Maritime, Logistics and transportation tracking

Features

- Ultra-thin thermal design, compact and portable.
- Integrated design for quick setup.

Performance Advantage

- Proven design beam tracking algorithm.
- Embedded LNA antenna design for better G/T performance.

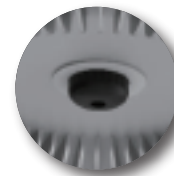
Specification table

Item	Spec description
Supportable Orbit	LEO
RF Frequency Range	KU (TDD) / KA (FDD)
EIRP	36 dBW(0°) / 40 dBW(0°)
Beamwidth	3°
Beam Resolution Tx/Rx	0.5°
Beam Switching	< 400 μs
Accuracy	Tracking Accuracy ±0.5°
G/T	9dB/K , 11dB/K
GPS	Internal GPS/ GNSS/ Galileo
IMU	Internal IMU Subsystem 9-Axis Gyro, Accelerator
Azimuth Range	360°
Elevation Range	±60° , 120°
Dimensions HxWxD	600x600x80 mm
Weight	<10 Kg w/o power adaptor, IP66, Fan-less
Operating Temperature	-4°F - 131°F (-20°C - 55°C)
Typical Power Consumption	150W
Powering Type	24V DC
Connector	Ethernet

Design features



Fanless



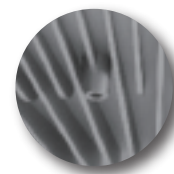
Central interface port



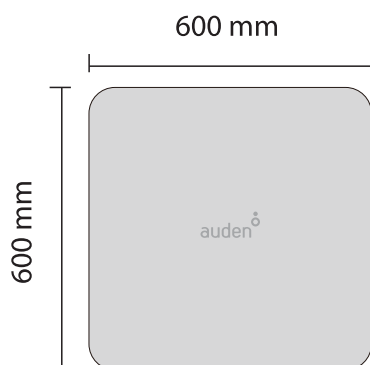
Curved top cover



Waterproof special coating



Detachable stand



Specification subject to change without notice. 2024 Auden Techno Corp. All Rights Reserved

For additional information, please +866-3-3631901 or email slb.sales@auden.com.tw